

# Tracts #1 & 2

## Custer, County

Over

The survey, a Registered Professional Land Surveyor, as hereby certify to the interested parties, on the date and year above said I or others under my direct supervision have made a direct survey of a parcel of land contained in the above

**RESEARCHERS** AT LBNL are studying the effects of the 1979 earthquake on the San Francisco Bay Area. The researchers are studying the effects of the earthquake on the San Francisco Bay Area. The researchers are studying the effects of the earthquake on the San Francisco Bay Area.

With a base price of \$21.4 per gallon, 100%ZnO is purchased by the manufacturer at the base or reference price of \$20.00 per gallon. If the price of zinc oxidized 600%ZnO is \$2.00 per gallon, the reference price of 100%ZnO is \$22.00 per gallon. The difference between the base price of 100%ZnO and the reference price of 100%ZnO is \$2.00 per gallon. This difference is the amount of the price differential that the manufacturer pays to the supplier of 600%ZnO. The difference between the base price of 100%ZnO and the reference price of 100%ZnO is \$2.00 per gallon. This difference is the amount of the price differential that the manufacturer pays to the supplier of 600%ZnO.

[illegible]

1984

**Public Statement**

Public Health Service officials, including Surgeon General Joseph A. Goldberger, said today that the results of a study of the health of the children of the atomic bomb survivors in Nagasaki, Japan, showed that the children of the survivors who had been exposed to the atomic bombing in 1945 had a higher incidence of cancer than the children of the survivors who had not been exposed to the bombing.



1. What is the difference between a **strong** and a **weak** password?  
 A strong password is a password that is difficult to guess, while a weak password is a password that is easy to guess.

2. What are some examples of strong passwords?  
 Examples of strong passwords include:

- A long password (at least 12 characters)
- A password that includes a mix of uppercase and lowercase letters, numbers, and symbols
- A password that is not a common word or phrase
- A password that is not a simple variation of a common word or phrase

3. What are some examples of weak passwords?  
 Examples of weak passwords include:

- A short password (fewer than 8 characters)
- A password that is a common word or phrase
- A password that is a simple variation of a common word or phrase
- A password that is a sequence of numbers or letters

4. How can you tell if a password is strong or weak?  
 You can tell if a password is strong or weak by using a password strength checker.

5. What are some tips for creating a strong password?  
 Tips for creating a strong password include:

- Using a long password (at least 12 characters)
- Using a mix of uppercase and lowercase letters, numbers, and symbols
- Avoiding common words or phrases
- Avoiding simple variations of common words or phrases
- Using a password manager to generate and store strong passwords

6. What are some tips for keeping your passwords secure?  
 Tips for keeping your passwords secure include:

- Not sharing your passwords with anyone
- Not writing down your passwords
- Not using the same password for multiple accounts
- Changing your passwords regularly
- Using a password manager to store your passwords

7. What are some common password security myths?  
 Common password security myths include:

- Myth: A password is only as strong as the person who created it.
- Myth: A password is only as strong as the person who stored it.
- Myth: A password is only as strong as the person who used it.
- Myth: A password is only as strong as the person who shared it.

8. What are some common password security mistakes?  
 Common password security mistakes include:

- Using a weak password
- Reusing a password
- Sharing a password
- Writing down a password
- Not changing a password

9. What are some common password security questions?  
 Common password security questions include:

- How often should I change my password?
- How long should my password be?
- What should my password include?
- How can I tell if my password is strong?

10. What are some common password security answers?  
 Common password security answers include:

- Change your password every 90 days.
- Your password should be at least 12 characters long.
- Your password should include a mix of uppercase and lowercase letters, numbers, and symbols.
- You can tell if your password is strong by using a password strength checker.

March 9, 2016

**LEGAL DESCRIPTION  
Proposed 30' Access Easement**

A tract of land laying in the Northwest Quarter (NW/4) of Section Fifteen (15), Township Twelve (12) North, Range Sixteen (16) West of the Indian Meridian, Custer County, Oklahoma, being more particularly described as follows:

COMMENCING at the Southeast corner of the Northwest Quarter (NW/4) of Section 15, Township 12 North, Range 16 West of the Indian Meridian;

THENCE North 00°54'57" East, along the East line of the Northwest Quarter (NW/4), a distance of 366.40 feet to the intersection of said East line with the North right-of-way line of Interstate Highway No. 40, said point being the POINT OF BEGINNING;

THENCE North 89°21'28" West, along said North right-of-way line, a distance of 1265.28 feet;

THENCE North 78°02'52" West, along said North right-of-way line, a distance of 152.97 feet;

THENCE North 89°21'28" West, along said North right-of-way line, a distance of 200.00 feet;

THENCE South 79°19'56" West, along said North right-of-way line, a distance of 152.97 feet;

THENCE North 89°21'28" West, along said North right-of-way line, a distance of 871.20 feet to the intersection of said North right-of-way line and the West line of said Northwest Quarter (NW/4);

THENCE North 00°45'57" East, along the West line of said Northwest Quarter (NW/4), a distance of 30.00 feet;

THENCE South 89°21'28" East a distance of 868.16 feet;

THENCE North 79°19'56" East a distance of 152.97 feet;

THENCE South 89°21'28" East a distance of 205.94 feet;

THENCE South 78°02'52" East a distance of 152.97 feet;

THENCE South 89°21'28" East a distance of 1262.45 feet to a point on the East line of said Northwest Quarter (NW/4);

THENCE South 00°54'57" West, along said East line, a distance of 30.00 feet to the POINT OF BEGINNING.

Said tract of land contains an area of 79,274 square feet or 1.82 acres, more or less.

The bearings contained herein are based upon the Oklahoma State Plane Coordinate System – North Zone.

This description prepared by Bob Manley PLS L.L.C.

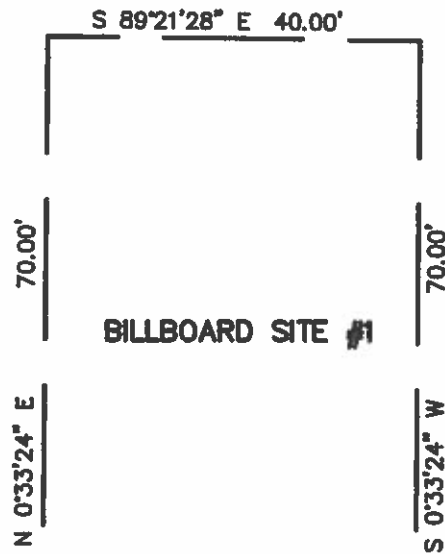
---

Bob Manley, P.L.S. 1584

# EXHIBIT "A"



SCALE: 1"=20'



BILLBOARD SITE #1

P.O.B.

N 89°21'28" W 40.00'

N 89°21'28" W 478.47'

## INTERSTATE No. 40

366.40'

N 0°54'57" E

P.O.C.  
SE COR., NW/4

March 9, 2016

**LEGAL DESCRIPTION  
Billboard Tract #1**

A tract of land laying in the Northwest Quarter (NW/4) of Section Fifteen (15), Township Twelve (12) North, Range Sixteen (16) West of the Indian Meridian, Custer County, Oklahoma, being more particularly described as follows:

COMMENCING at the Southeast corner of the Northwest Quarter (NW/4) of Section 15, Township 12 North, Range 16 West of the Indian Meridian;

THENCE North 00°54'57" East, along the East line of the Northwest Quarter (NW/4), a distance of 366.40 feet to the intersection of said East line with the North right-of-way line of Interstate Highway No. 40;

THENCE North 89°21'28" West, along said North right-of-way line, a distance of 478.47 feet to the POINT OF BEGINNING;

THENCE North 89°21'28" West, along said North right-of-way line, a distance of 40.00 feet;

THENCE North 00°33'24" East a distance of 70.00 feet;

THENCE South 89°21'28" East a distance of 40.00 feet;

THENCE South 00°33'24" West a distance of 70.00 feet to the POINT OF BEGINNING.

Said tract of land contains an area of 2800 square feet or 0.06 acres, more or less.

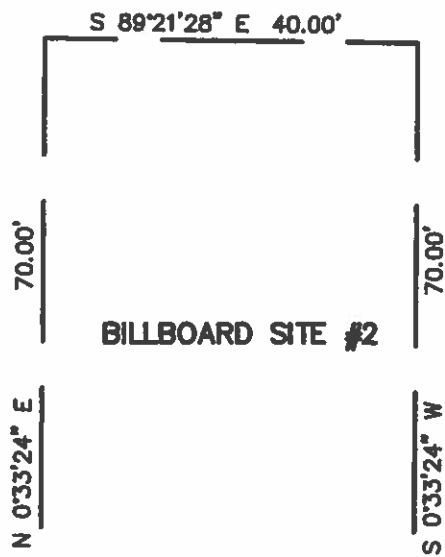
The bearings contained herein are based upon the Oklahoma State Plane Coordinate System – North Zone.

This description prepared by Bob Manley PLS L.L.C.

# EXHIBIT "A"



SCALE: 1"=20'



BILLBOARD SITE #2

P.O.B.

N 89°21'28" W 40.00'

N 89°21'28" W 1013.51'

INTERSTATE No. 40

366.40'

N 0°54'57" E

P.O.C.  
SE COR., NW/4

March 9, 2016

**LEGAL DESCRIPTION**  
**Billboard Tract #2**

A tract of land laying in the Northwest Quarter (NW/4) of Section Fifteen (15), Township Twelve (12) North, Range Sixteen (16) West of the Indian Meridian, Custer County, Oklahoma, being more particularly described as follows:

COMMENCING at the Southeast corner of the Northwest Quarter (NW/4) of Section 15, Township 12 North, Range 16 West of the Indian Meridian;

THENCE North 00°54'57" East, along the East line of the Northwest Quarter (NW/4), a distance of 366.40 feet to the intersection of said East line with the North right-of-way line of Interstate Highway No. 40;

THENCE North 89°21'28" West, along said North right-of-way line, a distance of 1013.51 feet to the POINT OF BEGINNING;

THENCE North 89°21'28" West, along said North right-of-way line, a distance of 40.00 feet;

THENCE North 00°33'24" East a distance of 70.00 feet;

THENCE South 89°21'28" East a distance of 40.00 feet;

THENCE South 00°33'24" West a distance of 70.00 feet to the POINT OF BEGINNING.

Said tract of land contains an area of 2800 square feet or 0.06 acres, more or less.

The bearings contained herein are based upon the Oklahoma State Plane Coordinate System – North Zone.

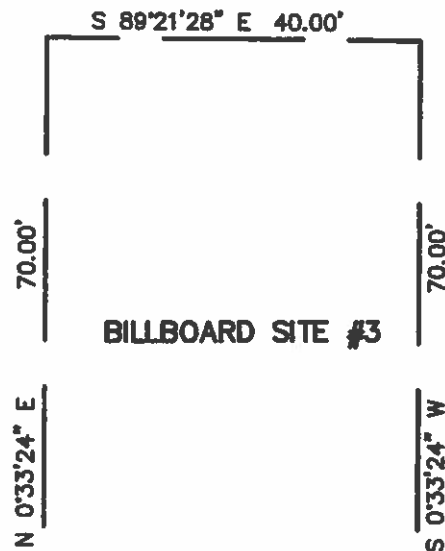
This description prepared by Bob Manley PLS L.L.C.



# EXHIBIT "A"



SCALE: 1"=20'



BILLBOARD SITE #3

P.O.B.

N 89°21'28" W 40.00'

N 89°21'28" W 1765.27'

INTERSTATE No. 40

366.40'

N 0°54'57" E

P.O.C.  
SE COR., NW/4

March 9, 2016

**LEGAL DESCRIPTION**  
**Billboard Tract #3**

A tract of land laying in the Northwest Quarter (NW/4) of Section Fifteen (15), Township Twelve (12) North, Range Sixteen (16) West of the Indian Meridian, Custer County, Oklahoma, being more particularly described as follows:

COMMENCING at the Southeast corner of the Northwest Quarter (NW/4) of Section 15, Township 12 North, Range 16 West of the Indian Meridian;

THENCE North 00°54'57" East, along the East line of the Northwest Quarter (NW/4), a distance of 366.40 feet to the intersection of said East line with the North right-of-way line of Interstate Highway No. 40;

THENCE North 89°21'28" West a distance of 1765.27 feet to a point on the North right-of-way line of Interstate Highway No. 40, said point being the POINT OF BEGINNING;

THENCE North 89°21'28" West, along said North right-of-way line, a distance of 40.00 feet;

THENCE North 00°33'24" East a distance of 70.00 feet;

THENCE South 89°21'28" East a distance of 40.00 feet;

THENCE South 00°33'24" West a distance of 70.00 feet to the POINT OF BEGINNING.

Said tract of land contains an area of 2800 square feet or 0.06 acres, more or less.

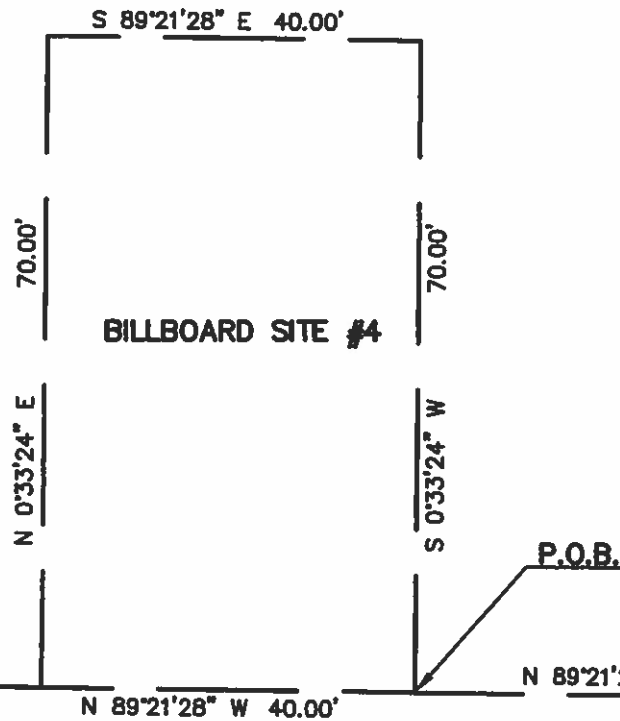
The bearings contained herein are based upon the Oklahoma State Plane Coordinate System – North Zone.

This description prepared by Bob Manley PLS L.L.C.

# EXHIBIT "A"



SCALE: 1"=20'



## INTERSTATE No. 40

P.O.C.  
SE COR., NW/4

366.40'

N 0°54'57" E

March 9, 2016

**LEGAL DESCRIPTION  
Billboard Tract #4**

A tract of land laying in the Northwest Quarter (NW/4) of Section Fifteen (15), Township Twelve (12) North, Range Sixteen (16) West of the Indian Meridian, Custer County, Oklahoma, being more particularly described as follows:

COMMENCING at the Southeast corner of the Northwest Quarter (NW/4) of Section 15, Township 12 North, Range 16 West of the Indian Meridian;

THENCE North 00°54'57" East, along the East line of the Northwest Quarter (NW/4), a distance of 366.40 feet to the intersection of said East line with the North right-of-way line of Interstate Highway No. 40;

THENCE North 89°21'28" West a distance of 2340.21 feet to a point on the North right-of-way line of Interstate Highway No. 40, said point being the POINT OF BEGINNING;

THENCE North 89°21'28" West, along said North right-of-way line, a distance of 40.00 feet;

THENCE North 00°33'24" East a distance of 70.00 feet;

THENCE South 89°21'28" East a distance of 40.00 feet;

THENCE South 00°33'24" West a distance of 70.00 feet to the POINT OF BEGINNING.

Said tract of land contains an area of 2800 square feet or 0.06 acres, more or less.

The bearings contained herein are based upon the Oklahoma State Plane Coordinate System – North Zone.

This description prepared by Bob Manley PLS L.L.C.



Google earth

© 2016 Google

Imagery Date: 12/2/2013 35°30'42.30"N 86°54'03.09"W elev: 1633 ft eye at: 42153 ft